



PROJECT PROFILE:

Mitchell Park Domes

2014

LOCATION:

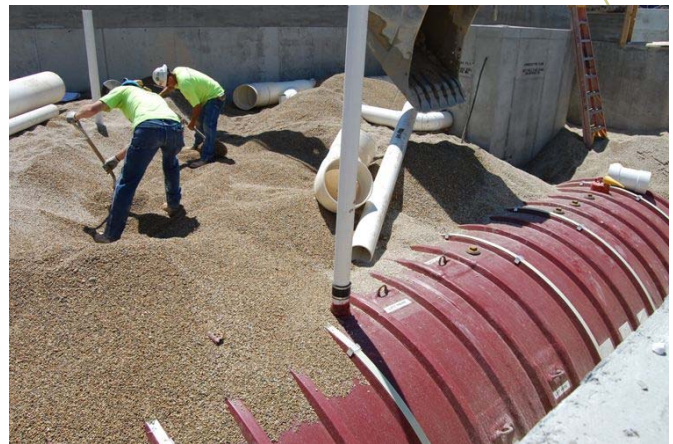
524 S. Layton Blvd, Milwaukee, WI

GENERAL CONTRACTOR:

VJS Construction

SIZE OF PLUMBING CONTRACT:

\$1,466,035



A \$10M, 65,000 square foot project consisting of nine greenhouses. Featuring floors heated by radiant energy, cooling pads to regulate temperature, new benches to hold plants that will be easier to clean with better water drainage and a computerized system connected to real-time weather data that can be operated remotely.

The water re-use system will collect approximately 38,000 gallons of water for every 1-inch of rain. Water was recaptured from the roof, stored in 80,000 gallon below-ground composite storage tanks and sanitized before irrigating plants allowing redistribution of water for year-round irrigation inside the greenhouses.